



PRODUCT CATALOG  
**TEDDERS**

2024



# CONTENTS

Top quality forage with SaMASZ machines	2
P4, P6, P4C, P6C	4
Mounted and trailed tedders	
P8	10
Mounted tedders	
P10, P12	18
Trailed tedders	
SaMASZ original spare parts	28
Anti-corrosion e-coat protection	30
About SaMASZ	32



## Top quality forage with SaMASZ machines



The fodder made of grass is one of the best and at the same time the cheapest nourishment for livestock.

By using the proper equipment it is possible to reach the swath, which can be easily processed to very nutritious fodder for cows.

SaMASZ agricultural machines are the guarantee of reaching the most valuable fodder from the mowed area. The solutions used in our machines have been developed by SaMASZ engineers for 40 years. For a long time they have been one of the most desired equipment, sought all over the world, because owing to them the fodder will suffice for longer time. It happens, because we have developed the whole technological process of harvest in the slightest detail. Mowing, tedding and raking with SaMASZ machines does not damage the turf. The swath is very clean, which increases its energy value. This leads to real time and money savings - the expenses are used more efficiently and the fodder will suffice for longer time.



TEDDERS  
P4, P6, P4C, P6C



Simple yet effective tedders that are ideal for small farms. Depending on the needs, there is choice between a mounted or trailed version. Both versions guarantee excellent results, speeding up the drying process and minimising nutrient losses in the forage.

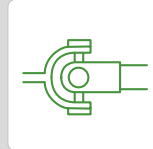
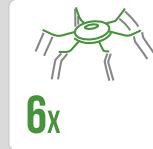
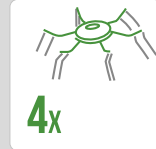
Machine category	Model name	Working width	Number of rotors
• Mounted	• P4-471	• 4,70 m	• 4-rotor
	• P4-531	• 5,30 m	• 4-rotor
	• P6-651	• 7,00 m	• 6-rotor
	• P6- 771	• 7,70 m	• 6-rotor
• Trailed (C)	• P4-531 C	• 5,30 m	• 4-rotor
	• P6-771 C	• 7,70 m	• 6-rotor

Check more information





## P4, P6, P4C, P6C



### P4 and P6 – Hitch

3-point rear mounted tedders of P4 and P6 series are equipped with a pivot hitch which makes maneuvering easier and protects turf. During work, the tractor's upper linkage is attached to the machine by a pin located in elongated hitch opening. This gives the machine freedom in the up-down direction. As a result, an extensive range of ground following feature is achieved.



### P4C and P6C – Hitch

The trailed P4C tedder is attached to the tractor by a drawbar. In this version, a hydraulic cylinder is used to smoothly adjust the angle of working units.

The trailed P6C tedder is equipped with a 2-point hitch and uses the tractor's lower links.



### Gearbox

Hermetically closed, oil-filled gearboxes ensure quiet machine operation and reduce the need for frequent maintenance. It also significantly contributes to the durability of the component.

The deeper-seated gear seal combined with the widened cover disc reduces the possibility of unsealing. An additional cutting element fitted next to the disc reduces the possibility of grass winding up.

Driveline between the rotors is transmitted by means of Cardan joints.



### Rotors

The rotors have arms made of tube profiles. The effect is a stable and durable mounting and extended service life.



### Tines

Tedding tines of 9.5 mm diameter are made of high-resilience steel, which, in combination with five coils at their base, enables flexible movement reducing the risk of damage. Tines of the same length guarantee high tedding quality of the material.





P4, P6, P4C, P6C

Tines mounting

The mount system prevetns tine coils from getting in contact with the rotor arm, significantly extending durability of the design. In addition, the rotor arms have a safety device to reduce the risk of losing tines during work.



Adjustable working angle

Both 3-point mounted and trailed tedders are equipped with adjustable driving chassis that enable additional adjustment of the working angle. What is important and user-friendly, no tools are needed to carry out the operation.



Adjustable driving chassis

In P4 and P6 3-point mounted tedders optionally is available adjustable driving chassis preventing forage from being thrown over the edge of the field during work.



Support wheel

As standard equipment, tedders are equipped with hitch height adjustment chains to ensure repeatable setup of the machine.

Support wheel is an available and popular optional equipment. It makes the process of coupling and maintaining the machine significantly easier and quicker.



TECHNICAL SPECIFICATION

		P4 - 471	P4 - 531	P6 - 651	P6 - 771
Working width	[m / ft]	4,70 / 15'5"	5,30 / 17'5"	7,00 / 22'11"	7,70 / 25'3"
Transport width	[m / ft]	2,95 / 9'8"	2,95 / 9'8"	2,95 / 9'8"	2,95 / 9'7"
Transport height	[m / ft]	2,50 / 8'2"	2,70 / 8'1"	3,60 / 11'8"	4,00 / 13'2"
Number of rotors	[pcs.]	4	4	6	6
Necessary hydraulic couplers		1 x single acting			
Working capacity	[ha/h / ac/h]	~ 5,60 / 13,85	~ 6,30 / 15,55	~ 7,80 / 19,30	~ 9,20 / 23
Number of arms per rotor	[pcs.]	6	6	6	6
Diameter of rotor with arms	[cm / ft]	160 / 5'3"	172 / 5'8"	160 / 5'3"	172 / 5'8"
RPM		540	540	540	540
3-point hitch cat.		II			
Power demand	[HP]	from 30	from 40	from 50	from 70
Tires (with inner tubes)	[pcs.]	16 × 6,5 - 8	16 × 6,5 - 8	16 × 6,5 - 8	16 × 6,5 - 8
Weight	[kg / lbs]	665 / 1470	680 / 1500	940 / 2072	968 / 2135
PTO shaft		tractor - tedder: with friction clutch			

		P4 - 531C	P6 - 771C
Working width	[m / ft]	5,30 / 17'5"	7,70 / 25'3"
Transport width	[m / ft]	2,95 / 9'8"	2,95 / 9'8"
Transport height	[m / ft]	2,75 / 8'2"	3,95/12'11"
Number of rotors	[pcs.]	4	4
Necessary hydraulic couplers		2 x single acting	2 x double acting
Working capacity	[ha/h / ac/h]	~ 6,30 / 15,55	~ 9,20 / 23
Number of arms per rotor	[pcs.]	6	6
Diameter of rotor with arms	[cm / ft]	172 / 5'8"	172 / 5'8"
RPM	[obr./min]	540	
3-point hitch cat.		II	
Power demand	[HP]	from 40	from 60
Tires (with inner tubes)	[pcs.]	16 × 6,5 - 8 / 18 × 8,5 - 8	260 × 75 - 15,3
Weight	[kg / lbs]	686 / 1515	1730 / 3020
PTO shaft		tractor - tedder: no clutch, built - in: with friction clutch	

TEDDERS  
P8



The 8-rotor tedders of the P8 series are characterised by excellent adaptation to varying landscape conditions and even spreading of the mowed material. High performance and versatility, make the machine ideal for both medium and large areas.

Machine category

- Mounted

Model name

- P8-790
- P8-890

Working width

- 7,90 m
- 8,90 m

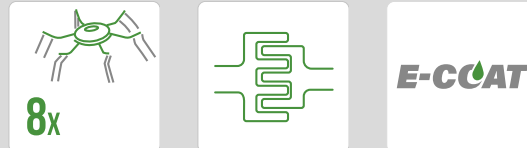
Number of rotors

- 8-rotor
- 8-rotor

Check more information







## Hitch

3-point rear mounted tedders of P4 and P6 series are equipped with a pivot hitch which makes maneuvering easier and protects turf. During work, the tractor's upper linkage is attached to the machine by a pin located in elongated hitch opening. This gives the machine freedom in the up-down direction. As a result, an extensive range of ground following feature is achieved.



## Gearbox

The semi-liquid grease gearbox is maintenance-free, making the tedder easy to use. It combines the advantages of an oil gearbox (quiet running) with those of a solid grease gearbox (compact design).



## Drive unit

The P8 tedders use finger joints between the outer rotors. This allows the machine to be folded from the 7,90 m and 8.9 m working positions to a transport position of no more than permissible 3 m. The joints are made of castings, which are durable and maintenance-free.



## Rotors

The rotors have arms made of tube profiles. The effect is a stable and durable mounting and extended service life.



## Tines overlapping

The P8 rotary tedders are equipped with new rotors of 136 and 153 cm diameter. Thanks to the smaller diameters, even short material is picked up very accurately.



## Tines

Tedding tines of 9.5 mm diameter are made of high-resilience steel, which, in combination with five coils at their base, enables flexible movement reducing the risk of damage. Tines of the same length guarantee high tedding quality of the material.





### Tines mounting

The mount system prevents tine coils from getting in contact with the rotor arm, significantly extending durability of the design. In addition, the rotor arms have a safety device to reduce the risk of losing tines during work.



### Ground following

Tedding tines work very close to the working wheels of the rotor, resulting in an immediate response to changes in terrain and improving the quality of tedding.



### Protective rails

The truss design of the protective rails increases the stability of the entire machine. In addition, it protects it from damage if it runs into an obstacle.





Headlands mechanism

A two-stage headland mechanism is available as an option. In the first stage, the working units are leveled and then, in the second stage they are lifted. This facilitates the turning maneuver and, above all, prevents the tedder's tines from digging into the ground.



Limiting cover

When working at the edge of the field, an optional limiting cover prevents material from being thrown over the edge of the working area. It is hydraulically controlled and can be mounted both on the left or right side of the machine.



		P8 - 790	P8 - 890
Working width	[m / ft]	7,90 / 25'11"	8,90 / 29'2"
Transport width	[m / ft]	2,90 / 9'6"	3,00 / 9'10"
Transport height	[m / ft]	3,45 / 11'3"	3,45 / 11'3"
Number of rotors	[pcs.]	8	8
Necessary hydraulic couplers		1 x double acting	
Working capacity	[ha/h / ac/h]	9,40 / 23	~ 10,60/25
Number of arms per rotor	[pcs.]	6	6
Diameter of rotor with arms	[cm / ft]	136 / 4'5"	153/5'
RPM	[obr./min]	540	540
3-point hitch cat.		II	
Power demand	[HP]	from 50	from 90
Tires (with inner tubes)	[pcs.]	18x8,5-8 (central) / 16x6,5-8 (side)	
Weight	[kg / lbs]	1 195 / 2 635	1320 / 2910
PTO shaft		tractor - tedder: with friction clutch	



TEDDERS  
P10, P12



A new level of efficiency with a series of high-performance tedders offering working widths of up to 13.30 m. These solutions have been specially designed for service providers and the most demanding users with large-scale farms. Despite their large working widths, the machines are characterised by their outstanding lateral ground following range. In addition, the patented mechanism for tool-free and quick change of the working angle significantly reduces the machine's set-up time.

Machine category

- Trailed

Model name

- P10-1100 T
- P12-1330 T

Working width

- 11,00 m
- 13,30 m

Number of rotors

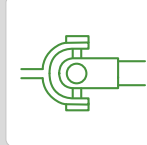
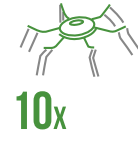
- 10-rotor
- 12-rotor

Check more information





## P10, P12



### Hitch

The P10 and P12 rotary tedders are coupled to the tractor with a 40 mm diameter drawbar (interchangeable). The drawbar is bolted and can easily be turned by 180°. This allows the machine to be connected to the upper or lower links of the tractor.



### Drive unit

The P10 and P12 tedders use finger joints between the outer rotors. This allows the machine to be folded from the 11 and 13 m working positions to a transport position of no more than permissible 3 m. The joints are made of castings, which are durable and maintenance-free.

Driveline between the rotors is transmitted by means of Cardan joints.



### KENNFIXX hydraulic handles

KENNFIXX type handles are included as standard equipment. They facilitate the connection of the tedder's hydraulics to the tractor section. When the machine is disconnected, the hydraulic hoses are placed in special holders to protect the couplings from dirt. The two-colour marking makes it easy for the operator to distinguish between the hoses.



### Patented working angle adjustment mechanism

The patented mechanism allows the working angle to be adjusted from 15° to 19°. Its adjustment results in a change in the working characteristics of the tines, which means that the intensity of the spreading of mass can be varied. In addition to adjusting the angle of the main frame, it is also possible to change the position of the rotor wheels in three positions.





Gearbox

The semi-liquid grease gearbox is maintenance-free, making the tedder easy to use. It combines the advantages of an oil gearbox (quiet running) with those of a solid grease gearbox (compact design).



Rotors

The small-diameter rotors (Ø 153 cm) operate at a greater angle of attack, resulting in better tedding performance.



Tedding arms mounting

The rotors have arms made of tube profiles. The effect is a stable and durable mounting and extended service life.



Tines overlapping

Small rotor diameter also results in increased overlapping of tines, ensuring full pick-up of the material.



Tines

Tedding tines of 9.5 mm diameter are made of high-resilience steel, which, in combination with five coils at their base, enables flexible movement reducing the risk of damage. Tines of the same length guarantee high tedding quality of the material.



Ground following: transport wheels

During work, the transport wheels do not change their position. That gives them additional function – ground following. This solution reduces the possibility of hitting the ground by tines, which significantly improves the quality of work.



Ground following: working wheels

Tedding tines work very close to the working wheels of the rotor, resulting in an immediate response to changes in terrain and improving the quality of tedding.



Side protective rails

The patented mechanism of joining the side protective rails enables unfolding and folding the tedder without the need of leaving the tractor cab. This design increases comfort of use of the machine.





## Ground following

Every rotor has been mounted on a separate frame. Consequently, there are two pivot pins per rotor. Such a design enables a large range of independent ground following in relation to neighbouring rotors despite the large working width of the machine.



## Protective rails

The truss design of the protective rails increases the stability of the entire machine. In addition, it protects it from damage if it runs into an obstacle.





Headlands mechanism

A two-stage headland mechanism is available as an option. In the first stage, the working units are leveled and then, in the second stage they are lifted. This facilitates the turning maneuver and, above all, prevents the tedder's tines from digging into the ground.



Limiting cover

When working at the edge of the field, an optional limiting cover prevents material from being thrown over the edge of the working area. It is hydraulically controlled and can be mounted both on the left or right side of the machine.



Warning plates

Factory-mounted warning plates with LED lighting ensure good visibility of the machine by road users.



		P10-1100T
Working width	[m / ft]	11,00 / 36'
Transport width	[m / ft]	3,00 / 9'10"
Transport height	[m / ft]	2,70 / 8'10"
Number of rotors	[pcs]	10
Necessary hydraulic couplers		1x double acting, 1x single acting
Working capacity	[ha/h]	13,10 / 32
Number of arms per rotor	[pcs]	6
Diameter of rotor with arms	[cm / ft]	153 / 5'
RPM		540
3-point hitch cat.		D40 transport hitch
Power demand	[HP]	from 50
Tires (with inner tubes)		16×6,5-8 ×8 (side), 18×8,5-8 ×2 (central), 340/55-16 ×2 (transport)
Weight	[kg / lbs]	2600
PTO shaft (built-in)		tractor - tedder: wide-angle with overrunning clutch built-in: with overload clutch

		P12-1330T
Working width	[m / ft]	13,30 / 43'6"
Transport width	[m / ft]	3,00 / 9'10"
Transport height	[m / ft]	2,70 / 8'10"
Number of rotors	[pcs]	12
Necessary hydraulic couplers		1 x single acting, 1 x double acting
Working capacity	[ha/h]	20 / 50
Number of arms per rotor	[pcs]	6
Diameter of rotor with arms	[cm / ft]	153 / 5'
RPM		540
3-point hitch cat.		D40 transport hitch
Power demand	[HP]	from 70
Tires (with inner tubes)		16×6,5-8 ×8 (side), 18×8,5-8 ×2 (central), 340/55-16 ×2 (transport)
Weight	[kg / lbs]	2 786
PTO shaft (built-in)		tractor - tedder: wide-angle with overrunning clutch built-in: with overload clutch



## SaMASZ ORIGINAL SPARE PARTS



By choosing original parts for SaMASZ agricultural machinery, users maintain the perfect technical condition of their equipment, which results in effective work in the field. Original parts are a key element in ensuring the failure-free performance of machinery.

Only original spare parts purchased from a SaMASZ dealer or at the company head office guarantee:

- trouble-free operation,
- higher productivity,
- long service life,
- safety in use,
- benefits of using the latest versions
- improved by the design team,
- increased value of the machine (in case of resale).



## ANTI-CORROSION E-COAT PROTECTION



Cathaphoretic painting (E-COAT) is used to cover elements that require coatings with significant corrosion resistance. At SaMASZ this process is carried out in a fully automated method. Each step is continuously monitored and archived, ensuring the repeatability of the process and the highest coating quality. In addition, it provides high weather resistance, corrosion protection, chemical and mechanical protection and an eye-catching design.

E-COAT technology is always individually tailored to the characteristics of the workpiece, meeting strict standards. The surface preparation, with zinc phosphating and E-COAT painting, makes it possible to cover the most complex shapes including difficult-to-reach components. The coating performed in this way ensures that the highest corrosion resistance is maintained, more than three times resistant than the standard iron phosphating method.

This enables perfect surface protection on all SaMASZ machines.



## ABOUT SaMASZ



Passion for work and constant searching for the best solutions are the virtues that were implemented 40 years by the founder Antoni Stolarski together with SaMASZ employees.

Taking care of tradition based on family values, the company is among the leaders of European manufacturers of agricultural equipment. Innovative solutions in SaMASZ machines are trusted not only in Europe, but also in the whole world. Nowadays the machines are exported to around 60 countries and the dealership network consists of 29 dealers in Poland and over 70 abroad.

The main idea of SaMASZ is constant development of its products based on the customers' needs and on agricultural and municipal global market trends. High level of quality and functionality of our machines is the outcome of our Research and Development Centre's dedicated work. We hire only the most talented engineers who focus on the research and development. We also closely cooperate with technical universities and specialized institutes.





## SaMASZ Sp. z o.o.

Trawiasta St. 1  
16-060 Zabłudów, Poland  
tel.: + 48 85 664 70 31  
e-mail: [export@samasz.com](mailto:export@samasz.com)

[www.samasz.pl/en](http://www.samasz.pl/en) 



## Visit us on social media:



Your dealer: